

## **Mcrae Ave between Wetherby and Shelley**

**March 03, 2020 To March 05, 2020**



The data presented here is for information purposes only and should not be considered authoritative for construction, geotechnical, engineering, navigational, legal, or other site-specific uses. The information shared is owned by the Transportation Division of the Engineering Department at the District of Saanich. Accuracy is not guaranteed.

Start Date: 2-Mar-20  
 Start Time: 0:05  
 Station ID: C0018-01

**Location 1: Mcrae Ave between Wetherby and Shelley**

Note:

DATE:	March 2, 2020		March 3, 2020		March 4, 2020		March 5, 2020		March 6, 2020		WK AVG		WK AVG	HOURLY
	MON		TUE		WED		THURS		FRI				CH 1+2	%
Time:	EB	WB	EB	WB	EB	WB	EB	WB	EB	WB	EB	WB		
12-1 AM			2	2	6	3	3	0			4	2	5	0.5%
1-2 AM			3	2	3	1	5	5			4	3	6	0.5%
2-3 AM			1	0	1	0	0	1			1	0	1	0.1%
3-4 AM			3	0	1	0	4	1			3	0	3	0.3%
4-5 AM			0	1	0	3	1	1			0	2	2	0.2%
5-6 AM			2	10	0	9	3	7			2	9	10	0.9%
6-7 AM			19	24	19	20	18	19			19	21	40	3.4%
7-8 AM			16	48	18	48	26	45			20	47	67	5.7%
8-9 AM			17	60	22	73	29	78			23	70	93	8.0%
9-10 AM			24	32	25	37	23	34			24	34	58	5.0%
10-11 AM			28	38	26	39	25	42			26	40	66	5.7%
11-12 PM			25	31	28	40	25	35			26	35	61	5.3%
12-1 PM			28	37	32	38	31	37			30	37	68	5.8%
1-2 PM			26	35	32	43	23	43			27	40	67	5.8%
2-3 PM			28	39	33	41	27	26			29	35	65	5.5%
3-4 PM			42	64	53	77	44	58			46	66	113	9.7%
4-5 PM			43	54	48	56	50	50			47	53	100	8.6%
5-6 PM			49	42	59	51	53	44			54	46	99	8.5%
6-7 PM			27	34	43	49	35	28			35	37	72	6.2%
7-8 PM			22	27	32	28	19	27			24	27	52	4.4%
8-9 PM			37	30	20	13	18	17			25	20	45	3.9%
9-10 PM			15	15	20	21	27	20			21	19	39	3.4%
10-11 PM			12	10	11	13	12	14			12	12	24	2.1%
11-12 AM			6	4	5	3	7	3			6	3	9	0.8%
<b>LANES</b>			<b>475</b>	<b>639</b>	<b>537</b>	<b>706</b>	<b>508</b>	<b>635</b>			<b>507</b>	<b>660</b>	<b>1167</b>	<b>100.0%</b>
<b>TOTAL</b>			<b>1114</b>		<b>1243</b>		<b>1143</b>				<b>1170</b>			
	MON		TUE		WED		THURS		FRI	WK AVG				

PEAK HOUR					TOTAL VEHICALS-PEAK PERIODS		2 HOUR PEAK INTERVALS			
MAX. 7 - 9 am PEAK HOUR	93	⇒	8.0%	between 8-9 AM	489	⇒ 6 HR TOTAL	<b>2 HR AM (7 - 9 AM)</b>			
MAX. 7 - 11 am PEAK HOUR	93	⇒	8.0%	between 8-9 AM	360	⇒ 4 HR TOTAL	VEH / HR	VEH / 2HR	2 HR %	
							7-8 AM	67	160	13.7%
							8-9 AM	93		
MAX. 11 am - 1 pm PEAK HOUR	68	⇒	5.8%	between 12-1 PM	<b>24 HOUR FACTORS</b>					
MAX. 11 am - 3 pm PEAK HOUR	68	⇒	5.8%	between 12-1 PM						
MAX. 4 - 6 pm PEAK HOUR	100	⇒	8.6%	between 4-5 PM						
MAX. 3 - 6 pm PEAK HOUR	113	⇒	9.7%	between 3-4 PM	2.39	⇒ 6-24 HR FACT.	<b>2 HR NOON (11 - 1 PM)</b>			
					3.24	⇒ 4-24 HR FACT.	VEH / HR	VEH / 2HR	2 HR %	
							11-12 PM	61	129	11.1%
							12-1 PM	68		
							<b>2 HR PM (4 - 6 PM)</b>			
							VEH / HR	VEH / 2HR	2 HR %	
							4-5 PM	100	200	17.1%
							5-6 PM	99		

**Mcrae Ave between Wetherby and Shelley**

Westbound

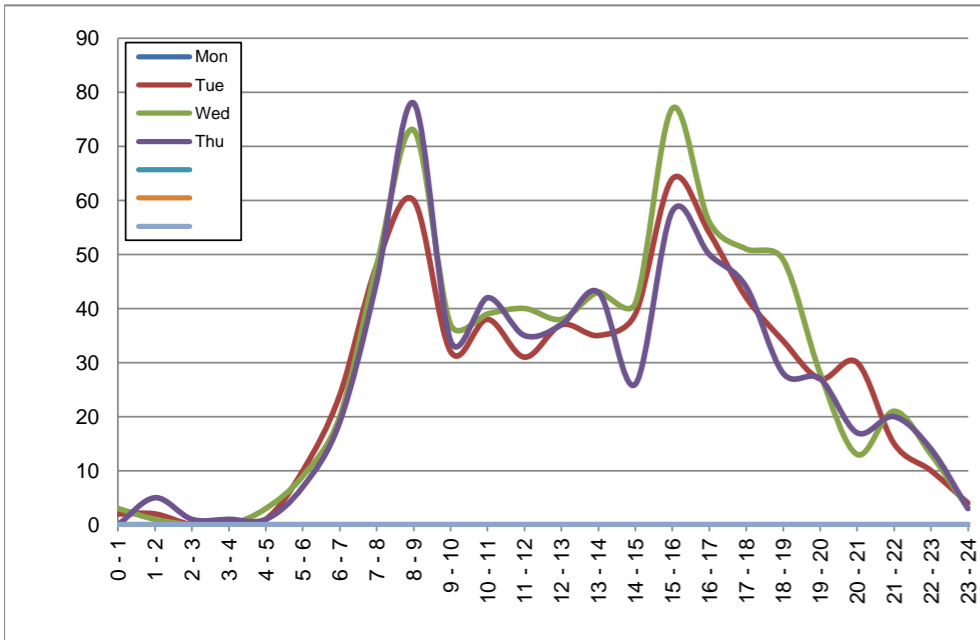
March 2, 2020 to March 5, 2020

**Hourly Volumes**

Time Period	Mon	Tue	Wed	Thu			
	Mar 2	Mar 3	Mar 4	Mar 5			
0 - 1		2	3	0			
1 - 2		2	1	5			
2 - 3		0	0	1			
3 - 4		0	0	1			
4 - 5		1	3	1			
5 - 6		10	9	7			
6 - 7		24	20	19			
7 - 8		48	48	45			
8 - 9		60	73	78			
9 - 10		32	37	34			
10 - 11		38	39	42			
11 - 12		31	40	35			
12 - 13		37	38	37			
13 - 14		35	43	43			
14 - 15		39	41	26			
15 - 16		64	77	58			
16 - 17		54	56	50			
17 - 18		42	51	44			
18 - 19		34	49	28			
19 - 20		27	28	27			
20 - 21		30	13	17			
21 - 22		15	21	20			
22 - 23		10	13	14			
23 - 24		4	3	3			
<b>Day Total</b>		<b>639</b>	<b>706</b>	<b>635</b>			

**15-Minute Volumes**

Time Start	Mon	Tue	Wed	Thu				Time Start	Mon	Tue	Wed	Thu			
	Mar 2	Mar 3	Mar 4	Mar 5					Mar 2	Mar 3	Mar 4	Mar 5			
0:00		0	1	0				12:00		9	13	8			
0:15		1	0	0				12:15		7	9	11			
0:30		1	1	0				12:30		14	7	6			
0:45		0	1	0				12:45		7	9	12			
1:00		1	1	3				13:00		13	3	11			
1:15		0	0	0				13:15		5	11	19			
1:30		0	0	1				13:30		11	19	10			
1:45		1	0	1				13:45		6	10	3			
2:00		0	0	0				14:00		10	9	6			
2:15		0	0	0				14:15		9	11	5			
2:30		0	0	1				14:30		9	9	6			
2:45		0	0	0				14:45		11	12	9			
3:00		0	0	0				15:00		12	14	10			
3:15		0	0	1				15:15		15	16	7			
3:30		0	0	0				15:30		25	31	28			
3:45		0	0	0				15:45		12	16	13			
4:00		0	1	0				16:00		18	15	9			
4:15		0	0	0				16:15		13	13	14			
4:30		0	0	0				16:30		14	17	13			
4:45		1	2	1				16:45		9	11	14			
5:00		2	2	0				17:00		13	13	10			
5:15		1	2	4				17:15		8	14	9			
5:30		6	3	3				17:30		6	9	16			
5:45		1	2	0				17:45		15	15	9			
6:00		0	2	3				18:00		13	15	9			
6:15		5	2	0				18:15		8	9	4			
6:30		10	12	8				18:30		7	11	9			
6:45		9	4	8				18:45		6	14	6			
7:00		13	7	8				19:00		8	13	8			
7:15		7	10	6				19:15		5	9	4			
7:30		15	13	14				19:30		9	2	7			
7:45		13	18	17				19:45		5	4	8			
8:00		10	19	23				20:00		8	3	6			
8:15		22	21	28				20:15		10	3	3			
8:30		15	18	17				20:30		6	4	3			
8:45		13	15	10				20:45		6	3	5			
9:00		9	9	11				21:00		5	4	5			
9:15		7	12	6				21:15		4	7	6			
9:30		7	6	9				21:30		1	5	5			
9:45		9	10	8				21:45		5	5	4			
10:00		7	11	14				22:00		1	6	6			
10:15		11	9	9				22:15		4	0	5			
10:30		14	10	8				22:30		2	3	2			
10:45		6	9	11				22:45		3	4	1			
11:00		8	8	8				23:00		1	2	1			
11:15		8	9	8				23:15		1	0	1			
11:30		4	12	7				23:30		2	1	0			
11:45		11	11	12				23:45		0	0	1			



Site notes:

**Mcrae Ave between Wetherby and Shelley**

Eastbound

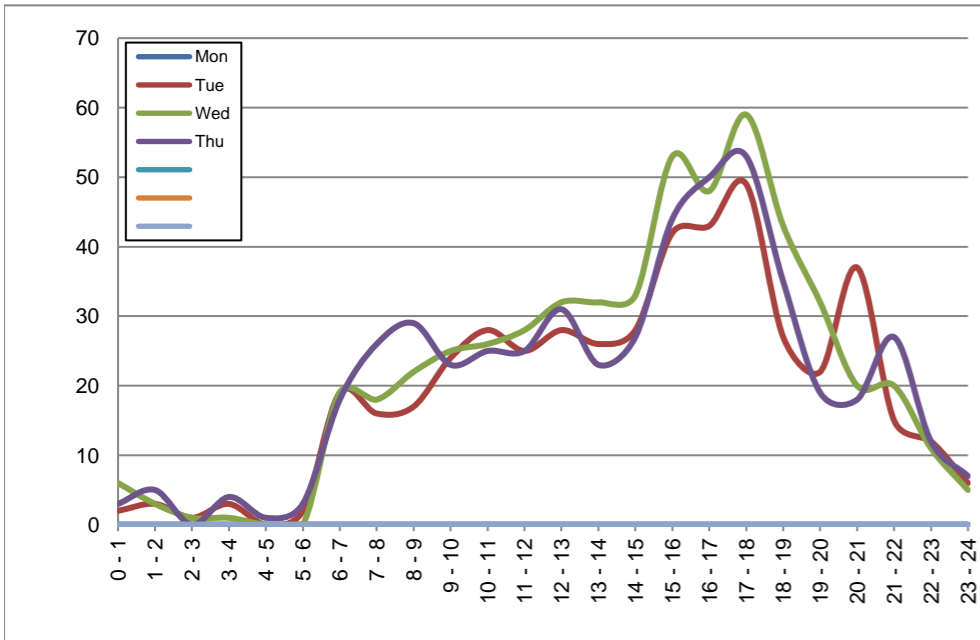
March 2, 2020 to March 5, 2020

**Hourly Volumes**

Time Period	Mon	Tue	Wed	Thu			
	Mar 2	Mar 3	Mar 4	Mar 5			
0 - 1		2	6	3			
1 - 2		3	3	5			
2 - 3		1	1	0			
3 - 4		3	1	4			
4 - 5		0	0	1			
5 - 6		2	0	3			
6 - 7		19	19	18			
7 - 8		16	18	26			
8 - 9		17	22	29			
9 - 10		24	25	23			
10 - 11		28	26	25			
11 - 12		25	28	25			
12 - 13		28	32	31			
13 - 14		26	32	23			
14 - 15		28	33	27			
15 - 16		42	53	44			
16 - 17		43	48	50			
17 - 18		49	59	53			
18 - 19		27	43	35			
19 - 20		22	32	19			
20 - 21		37	20	18			
21 - 22		15	20	27			
22 - 23		12	11	12			
23 - 24		6	5	7			
<b>Day Total</b>		<b>475</b>	<b>537</b>	<b>508</b>			

**15-Minute Volumes**

Time Start	Mon	Tue	Wed	Thu				Time Start	Mon	Tue	Wed	Thu			
	Mar 2	Mar 3	Mar 4	Mar 5					Mar 2	Mar 3	Mar 4	Mar 5			
0:00		1	3	1				12:00		7	12	6			
0:15		0	1	0				12:15		6	3	7			
0:30		1	0	0				12:30		5	9	8			
0:45		0	2	2				12:45		10	8	10			
1:00		1	0	3				13:00		3	10	5			
1:15		1	2	0				13:15		12	9	7			
1:30		0	1	1				13:30		8	10	6			
1:45		1	0	1				13:45		3	3	5			
2:00		1	0	0				14:00		6	8	5			
2:15		0	0	0				14:15		8	5	9			
2:30		0	0	0				14:30		6	8	8			
2:45		0	1	0				14:45		8	12	5			
3:00		1	0	1				15:00		5	15	9			
3:15		0	1	2				15:15		12	12	10			
3:30		1	0	1				15:30		14	12	11			
3:45		1	0	0				15:45		11	14	14			
4:00		0	0	0				16:00		6	12	14			
4:15		0	0	0				16:15		13	14	9			
4:30		0	0	1				16:30		11	8	17			
4:45		0	0	0				16:45		13	14	10			
5:00		0	0	2				17:00		13	20	13			
5:15		0	0	0				17:15		13	16	16			
5:30		2	0	0				17:30		11	12	9			
5:45		0	0	1				17:45		12	11	15			
6:00		0	2	2				18:00		10	9	13			
6:15		7	4	3				18:15		5	14	7			
6:30		5	7	7				18:30		6	6	9			
6:45		7	6	6				18:45		6	14	6			
7:00		5	4	1				19:00		5	13	5			
7:15		5	3	9				19:15		8	9	5			
7:30		3	6	7				19:30		5	3	3			
7:45		3	5	9				19:45		4	7	6			
8:00		6	4	5				20:00		9	4	6			
8:15		5	6	12				20:15		9	4	6			
8:30		3	5	7				20:30		9	6	3			
8:45		3	7	5				20:45		10	6	3			
9:00		7	6	6				21:00		3	4	5			
9:15		5	4	4				21:15		2	4	5			
9:30		5	8	6				21:30		4	6	9			
9:45		7	7	7				21:45		6	6	8			
10:00		5	5	2				22:00		4	3	3			
10:15		7	10	8				22:15		3	5	6			
10:30		9	5	11				22:30		2	2	2			
10:45		7	6	4				22:45		3	1	1			
11:00		11	6	6				23:00		2	1	2			
11:15		5	5	8				23:15		3	3	2			
11:30		4	5	9				23:30		0	0	2			
11:45		5	12	2				23:45		1	1	1			



Site notes:

# Vehicle Speed Summary

Saanich Engineering Department

Count Id: C0018-01

Filename: Mcrae Ave between Wetherby and Shelley-Mar-2020.xlsm

**Location:** Mcrae Ave between Wetherby and Shelley

Note:

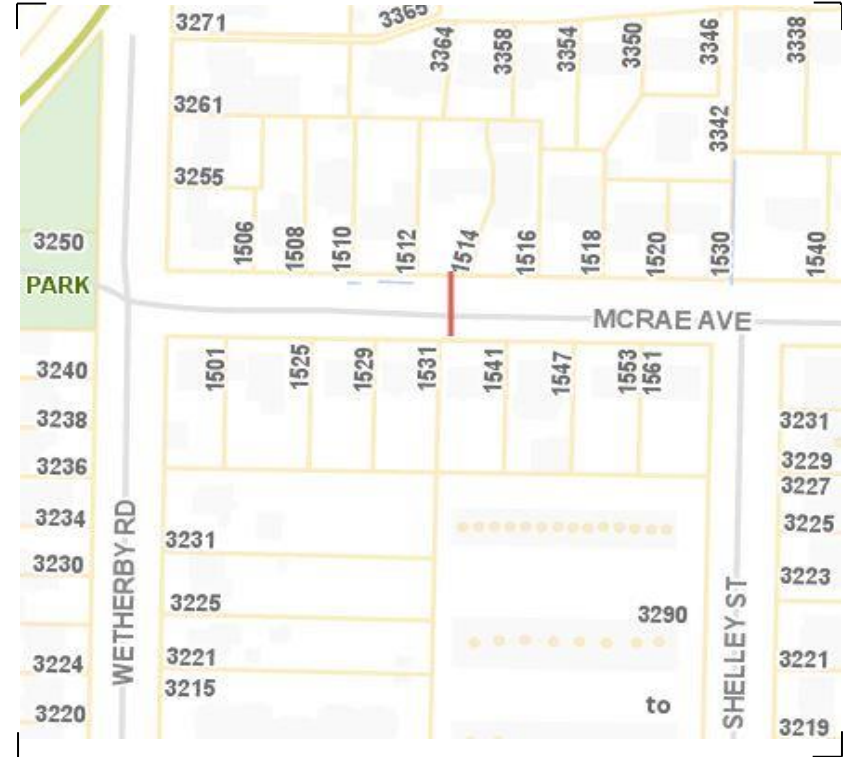
Direction: **East-West**

Dates: **March 03, 2020 To March 05, 2020**

*Filtered data*

AVG. SPEED	<b>25</b> mph	<b>40</b> km/h
50 % SPEED	<b>25</b> mph	<b>40</b> km/h
85 % SPEED	<b>30</b> mph	<b>48</b> km/h
95 % SPEED	<b>32</b> mph	<b>52</b> km/h

Location Map



**Mcrae Ave between Wetherby and Shelley**

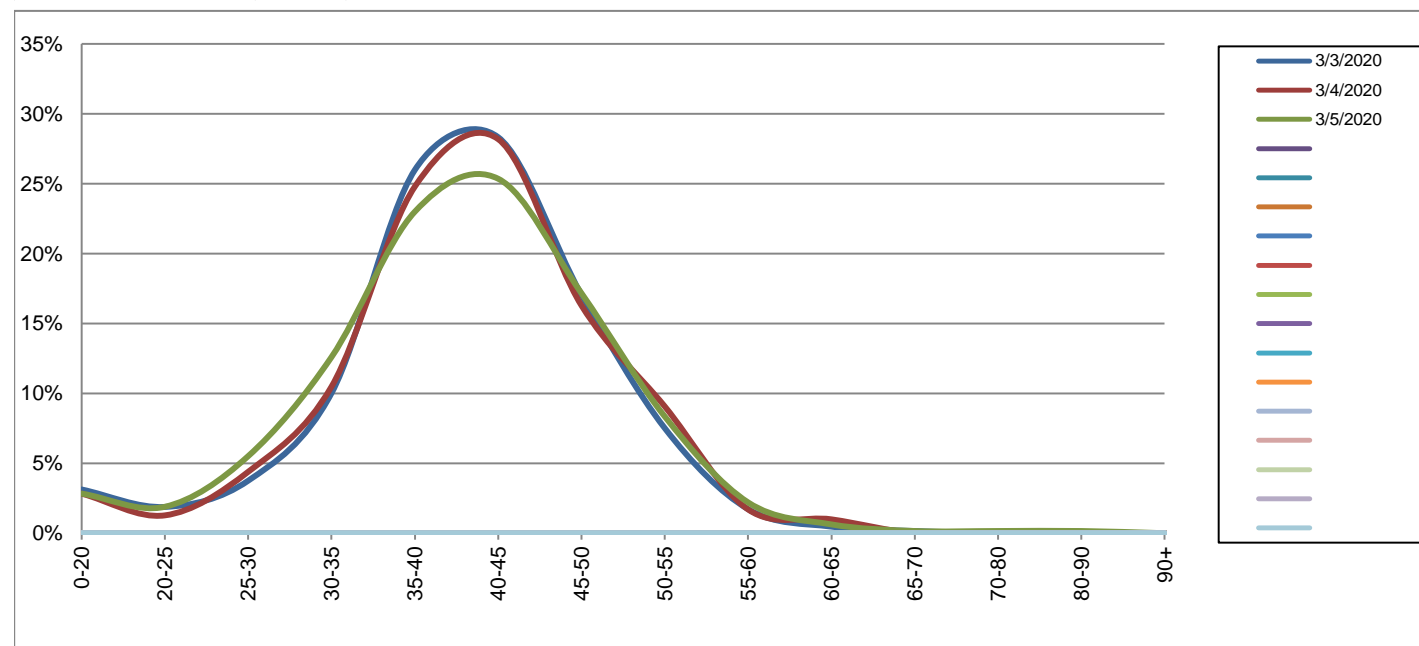
Westbound

March 3, 2020 to March 5, 2020

Daily Speed Bin Percentages															Daily Speed Bin Volumes														Total	Avg. Speed
Bin #	1	2	3	4	5	6	7	8	9	10	11	12	13	14	1	2	3	4	5	6	7	8	9	10	11	12	13	14		
Bin Speeds	0-20	20-25	25-30	30-35	35-40	40-45	45-50	50-55	55-60	60-65	65-70	70-80	80-90	90+	0-20	20-25	25-30	30-35	35-40	40-45	45-50	50-55	55-60	60-65	65-70	70-80	80-90	90+		
3/3/2020	3.1%	1.9%	3.8%	10.0%	26.0%	28.3%	17.1%	7.5%	1.7%	0.5%	0.2%	0.0%	0.0%	0.0%	20	12	24	64	166	181	109	48	11	3	1	0	0	0	639	40
3/4/2020	2.8%	1.3%	4.4%	10.5%	24.8%	28.2%	16.3%	9.1%	1.7%	1.0%	0.0%	0.0%	0.0%	0.0%	20	9	31	74	175	199	115	64	12	7	0	0	0	0	706	41
3/5/2020	2.8%	1.9%	5.5%	12.6%	23.0%	25.4%	17.2%	8.3%	2.2%	0.6%	0.2%	0.2%	0.2%	0.0%	18	12	35	80	146	161	109	53	14	4	1	1	1	0	635	40
<b>Total</b>	2.9%	1.7%	4.5%	11.0%	24.6%	27.3%	16.8%	8.3%	1.9%	0.7%	0.1%	0.1%	0.1%	0.0%	58	33	90	218	487	541	333	165	37	14	2	1	1	0	1980	40

**Speed Data Summary**

Bin #	1	2	3	4	5	6	7	8	9	10	11	12	13	14	Total
Bin Speeds	0-20	20-25	25-30	30-35	35-40	40-45	45-50	50-55	55-60	60-65	65-70	70-80	80-90	90+	
Survey Total	58	33	90	218	487	541	333	165	37	14	2	1	1	0	1980
% Total	2.9%	1.7%	4.5%	11.0%	24.6%	27.3%	16.8%	8.3%	1.9%	0.7%	0.1%	0.1%	0.1%	0.0%	100%
Accumulated %	2.9%	4.6%	9.1%	20.2%	44.7%	72.1%	88.9%	97.2%	99.1%	99.8%	99.9%	99.9%	100.0%	100%	
Inverse Accum. %	97.1%	95.4%	90.9%	79.8%	55.3%	27.9%	11.1%	2.8%	0.9%	0.2%	0.1%	0.1%	0.0%	0.0%	
Average Speed	40 KM/H														



Site notes:

**Mcrae Ave between Wetherby and Shelley**

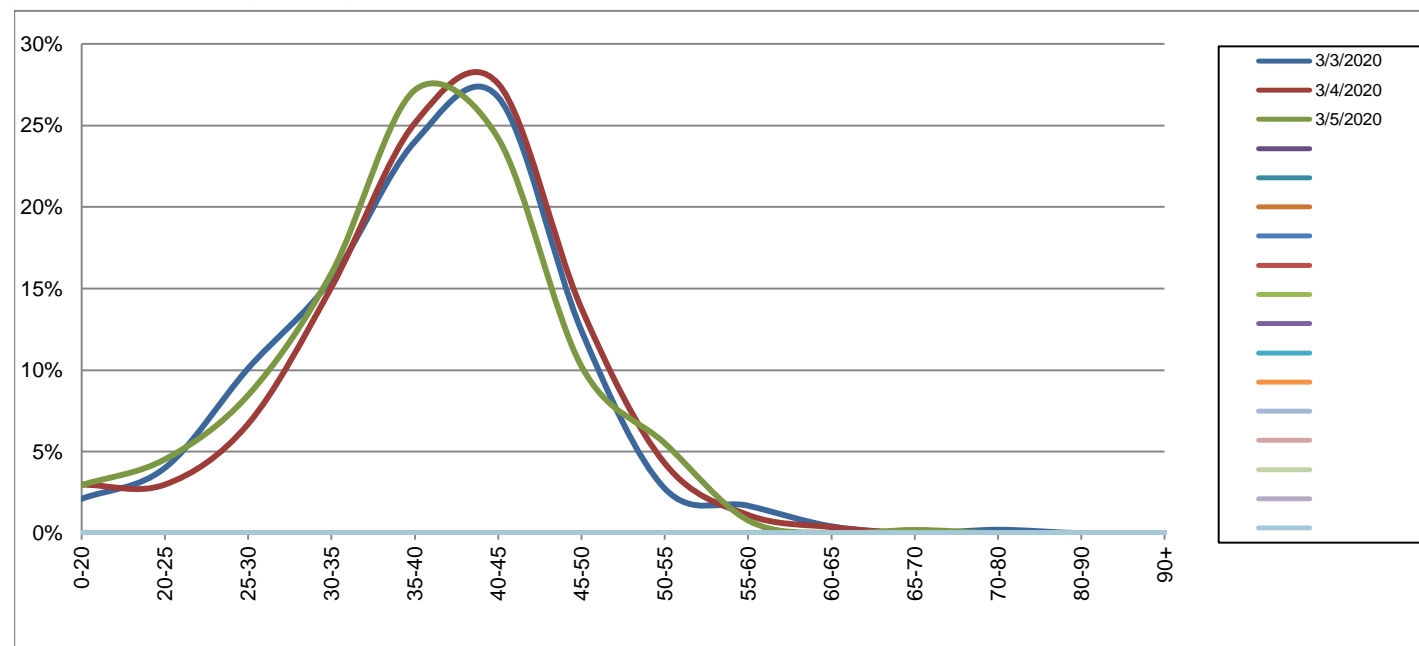
Eastbound

March 3, 2020 to March 5, 2020

Daily Speed Bin Percentages															Daily Speed Bin Volumes														Total	Avg. Speed
Bin #	1	2	3	4	5	6	7	8	9	10	11	12	13	14	1	2	3	4	5	6	7	8	9	10	11	12	13	14		
Bin Speeds	0-20	20-25	25-30	30-35	35-40	40-45	45-50	50-55	55-60	60-65	65-70	70-80	80-90	90+	0-20	20-25	25-30	30-35	35-40	40-45	45-50	50-55	55-60	60-65	65-70	70-80	80-90	90+	Volume	Speed
3/3/2020	2.1%	4.0%	10.1%	15.6%	24.0%	26.7%	12.4%	2.7%	1.7%	0.4%	0.0%	0.2%	0.0%	0.0%	10	19	48	74	114	127	59	13	8	2	0	1	0	0	475	38
3/4/2020	3.0%	3.0%	6.7%	15.1%	25.1%	27.6%	13.8%	4.3%	1.1%	0.4%	0.0%	0.0%	0.0%	0.0%	16	16	36	81	135	148	74	23	6	2	0	0	0	0	537	39
3/5/2020	3.0%	4.5%	8.5%	15.9%	27.2%	24.2%	10.2%	5.5%	0.8%	0.0%	0.2%	0.0%	0.0%	0.0%	15	23	43	81	138	123	52	28	4	0	1	0	0	0	508	38
<b>Total</b>	2.7%	3.8%	8.4%	15.5%	25.5%	26.2%	12.2%	4.2%	1.2%	0.3%	0.1%	0.1%	0.0%	0.0%	41	58	127	236	387	398	185	64	18	4	1	1	0	0	1520	38

**Speed Data Summary**

Bin #	1	2	3	4	5	6	7	8	9	10	11	12	13	14	Total
Bin Speeds	0-20	20-25	25-30	30-35	35-40	40-45	45-50	50-55	55-60	60-65	65-70	70-80	80-90	90+	
Survey Total	41	58	127	236	387	398	185	64	18	4	1	1	0	0	1520
% Total	2.7%	3.8%	8.4%	15.5%	25.5%	26.2%	12.2%	4.2%	1.2%	0.3%	0.1%	0.1%	0.0%	0.0%	100%
Accumulated %	2.7%	6.5%	14.9%	30.4%	55.9%	82.0%	94.2%	98.4%	99.6%	99.9%	99.9%	100.0%	100.0%	100%	
Inverse Accum. %	97.3%	93.5%	85.1%	69.6%	44.1%	18.0%	5.8%	1.6%	0.4%	0.1%	0.1%	0.0%	0.0%	0.0%	
Average Speed	38 KM/H														



Site notes:

**Mcrae Ave between Wetherby and Shelley**

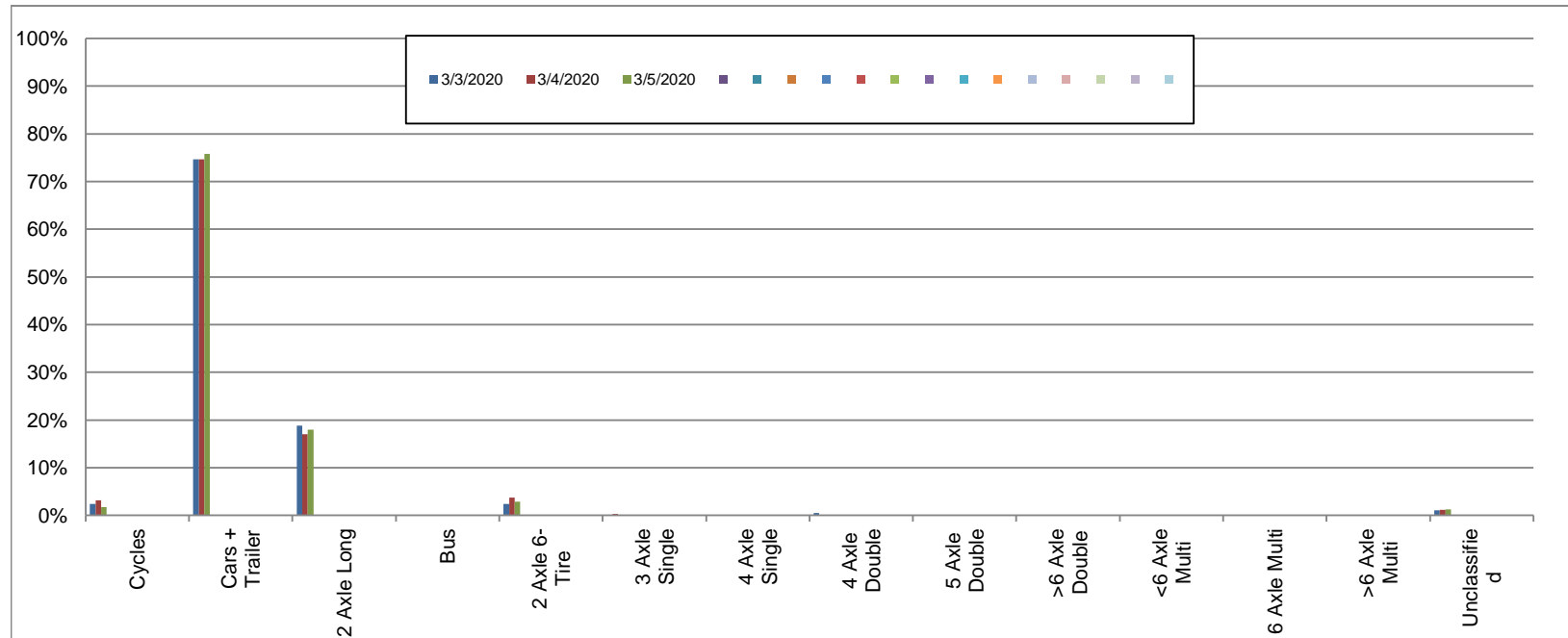
Westbound

March 3, 2020 to March 5, 2020

Daily Class Bin Percentages															Daily Class Bin Volumes															
Bin #	1	2	3	4	5	6	7	8	9	10	11	12	13	14	1	2	3	4	5	6	7	8	9	10	11	12	13	14	Total Volume	
Bin Class	Cycles	Cars + Trailer	2 Axle Long	Bus	2 Axle 6-Tire	3 Axle Single	4 Axle Single	4 Axle Double	5 Axle Double	>6 Axle Double	<6 Axle Multi	6 Axle Multi	>6 Axle Multi	Unclassified	Cycles	Cars + Trailer	2 Axle Long	Bus	2 Axle 6-Tire	3 Axle Single	4 Axle Single	4 Axle Double	5 Axle Double	>6 Axle Double	<6 Axle Multi	6 Axle Multi	>6 Axle Multi	Unclassified		
3/3/2020	2.3%	74.6%	18.8%	0.2%	2.3%	0.2%	0.0%	0.5%	0.0%	0.0%	0.0%	0.0%	0.0%	1.1%	15	477	120	1	15	1	0	3	0	0	0	0	0	0	7	639
3/4/2020	3.1%	74.6%	17.0%	0.0%	3.7%	0.3%	0.0%	0.1%	0.0%	0.0%	0.0%	0.0%	0.0%	1.1%	22	527	120	0	26	2	0	1	0	0	0	0	0	0	8	706
3/5/2020	1.7%	75.7%	18.0%	0.2%	2.8%	0.0%	0.2%	0.2%	0.0%	0.0%	0.0%	0.0%	0.0%	1.3%	11	481	114	1	18	0	1	1	0	0	0	0	0	0	8	635
<b>Total</b>	<b>2.4%</b>	<b>75.0%</b>	<b>17.9%</b>	<b>0.1%</b>	<b>3.0%</b>	<b>0.2%</b>	<b>0.1%</b>	<b>0.3%</b>	<b>0.0%</b>	<b>0.0%</b>	<b>0.0%</b>	<b>0.0%</b>	<b>0.0%</b>	<b>1.2%</b>	<b>48</b>	<b>1485</b>	<b>354</b>	<b>2</b>	<b>59</b>	<b>3</b>	<b>1</b>	<b>5</b>	<b>0</b>	<b>0</b>	<b>0</b>	<b>0</b>	<b>0</b>	<b>23</b>	<b>1980</b>	

**Class Data Summary**

Bin #	1	2	3	4	5	6	7	8	9	10	11	12	13	14	Total Volume
Bin Class	Cycles	Cars + Trailer	2 Axle Long	Bus	2 Axle 6-Tire	3 Axle Single	4 Axle Single	4 Axle Double	5 Axle Double	>6 Axle Double	<6 Axle Multi	6 Axle Multi	>6 Axle Multi	Unclassified	Total Volume
<b>Survey Total</b>	48	1485	354	2	59	3	1	5	0	0	0	0	0	23	1980
<b>% Total</b>	2.4%	75.0%	17.9%	0.1%	3.0%	0.2%	0.1%	0.3%	0.0%	0.0%	0.0%	0.0%	0.0%	1.2%	100%
<b>Accumulated %</b>	2.4%	77.4%	95.3%	95.4%	98.4%	98.5%	98.6%	98.8%	98.8%	98.8%	98.8%	98.8%	98.8%	100.0%	
<b>Inv. Accum. %</b>	97.6%	22.6%	4.7%	4.6%	1.6%	1.5%	1.4%	1.2%	1.2%	1.2%	1.2%	1.2%	1.2%	0.0%	



**Classification Descriptions**

Bin #	Bin Description
1	Motorcycles
2	Passenger cars, including those with recreational trailers
3	2-axle pick-ups, vans, and RVs, including those with recreational trailers
4	Buses
5	2-axle, 6-tire single units
6	3-axle single units
7	4-axle single units
8	3-axle or 4-axle double unit
9	5-axle double unit
10	6-, 7-, or 8-axle double unit
11	5-axle multiple unit
12	6-axle multiple unit
13	7-or-more-axle multiple unit
14	Vehicles that could not be classified

Site notes:



**Mcrae Ave between Wetherby and Shelley**

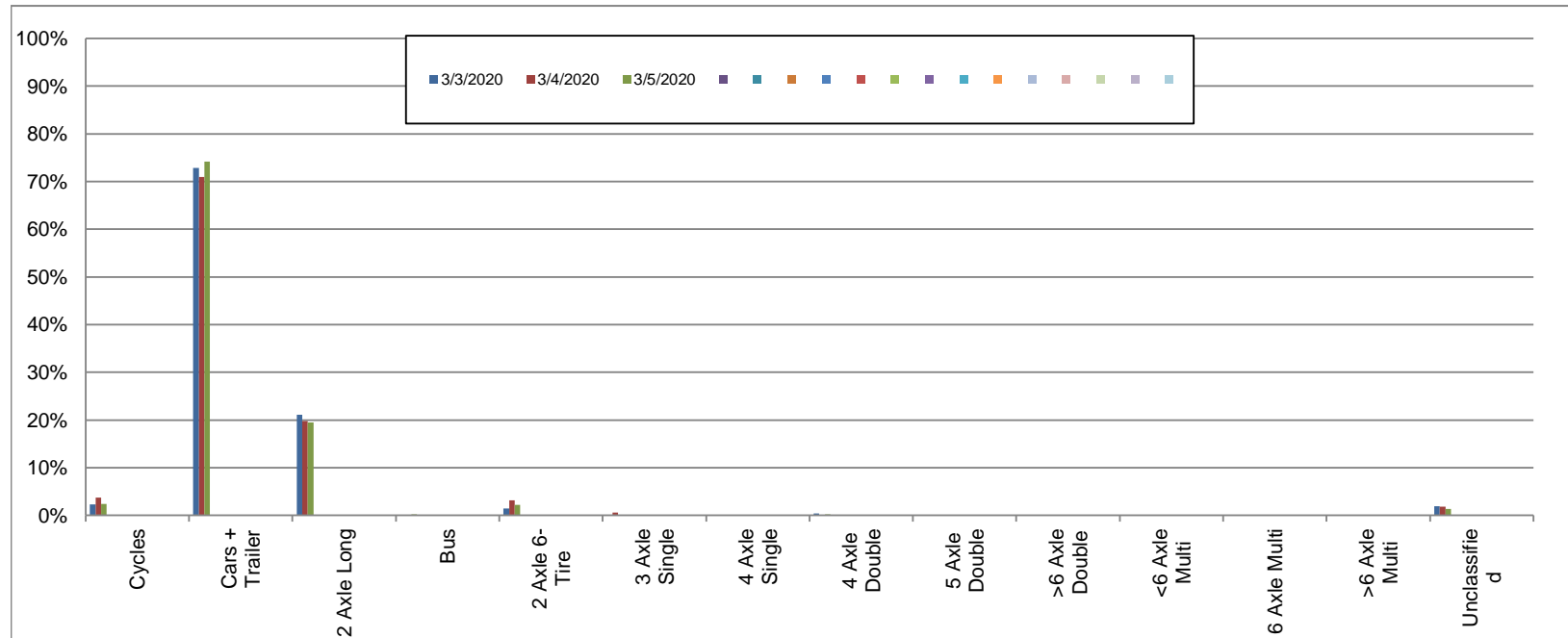
Eastbound

March 3, 2020 to March 5, 2020

Daily Class Bin Percentages															Daily Class Bin Volumes											Total Volume				
Bin #	1	2	3	4	5	6	7	8	9	10	11	12	13	14	1	2	3	4	5	6	7	8	9	10	11		12	13	14	
Bin Class	Cycles	Cars + Trailer	2 Axle Long	Bus	2 Axle 6-Tire	3 Axle Single	4 Axle Single	4 Axle Double	5 Axle Double	>6 Axle Double	<6 Axle Multi	6 Axle Multi	>6 Axle Multi	Unclassified	Cycles	Cars + Trailer	2 Axle Long	Bus	2 Axle 6-Tire	3 Axle Single	4 Axle Single	4 Axle Double	5 Axle Double	>6 Axle Double	<6 Axle Multi	6 Axle Multi	>6 Axle Multi	Unclassified		
3/3/2020	2.3%	72.8%	21.1%	0.0%	1.5%	0.0%	0.0%	0.4%	0.0%	0.0%	0.0%	0.0%	0.0%	1.9%	11	346	100	0	7	0	0	2	0	0	0	0	0	0	9	475
3/4/2020	3.7%	70.9%	19.7%	0.0%	3.2%	0.6%	0.0%	0.0%	0.0%	0.0%	0.0%	0.0%	0.0%	1.9%	20	381	106	0	17	3	0	0	0	0	0	0	0	0	10	537
3/5/2020	2.4%	74.2%	19.5%	0.2%	2.2%	0.0%	0.0%	0.2%	0.0%	0.0%	0.0%	0.0%	0.0%	1.4%	12	377	99	1	11	0	0	1	0	0	0	0	0	0	7	508
<b>Total</b>	<b>2.8%</b>	<b>72.6%</b>	<b>20.1%</b>	<b>0.1%</b>	<b>2.3%</b>	<b>0.2%</b>	<b>0.0%</b>	<b>0.2%</b>	<b>0.0%</b>	<b>0.0%</b>	<b>0.0%</b>	<b>0.0%</b>	<b>0.0%</b>	<b>1.7%</b>	<b>43</b>	<b>1104</b>	<b>305</b>	<b>1</b>	<b>35</b>	<b>3</b>	<b>0</b>	<b>3</b>	<b>0</b>	<b>0</b>	<b>0</b>	<b>0</b>	<b>0</b>	<b>26</b>	<b>1520</b>	

**Class Data Summary**

Bin #	1	2	3	4	5	6	7	8	9	10	11	12	13	14	Total Volume
Bin Class	Cycles	Cars + Trailer	2 Axle Long	Bus	2 Axle 6-Tire	3 Axle Single	4 Axle Single	4 Axle Double	5 Axle Double	>6 Axle Double	<6 Axle Multi	6 Axle Multi	>6 Axle Multi	Unclassified	Total Volume
<b>Survey Total</b>	43	1104	305	1	35	3	0	3	0	0	0	0	0	26	1520
<b>% Total</b>	2.8%	72.6%	20.1%	0.1%	2.3%	0.2%	0.0%	0.2%	0.0%	0.0%	0.0%	0.0%	0.0%	1.7%	100%
<b>Accumulated %</b>	2.8%	75.5%	95.5%	95.6%	97.9%	98.1%	98.1%	98.3%	98.3%	98.3%	98.3%	98.3%	98.3%	100.0%	
<b>Inv. Accum. %</b>	97.2%	24.5%	4.5%	4.4%	2.1%	1.9%	1.9%	1.7%	1.7%	1.7%	1.7%	1.7%	1.7%	0.0%	



**Classification Descriptions**

Bin #	Bin Description
1	Motorcycles
2	Passenger cars, including those with recreational trailers
3	2-axle pick-ups, vans, and RVs, including those with recreational trailers
4	Buses
5	2-axle, 6-tire single units
6	3-axle single units
7	4-axle single units
8	3-axle or 4-axle double unit
9	5-axle double unit
10	6-, 7-, or 8-axle double unit
11	5-axle multiple unit
12	6-axle multiple unit
13	7-or-more-axle multiple unit
14	Vehicles that could not be classified

Site notes: